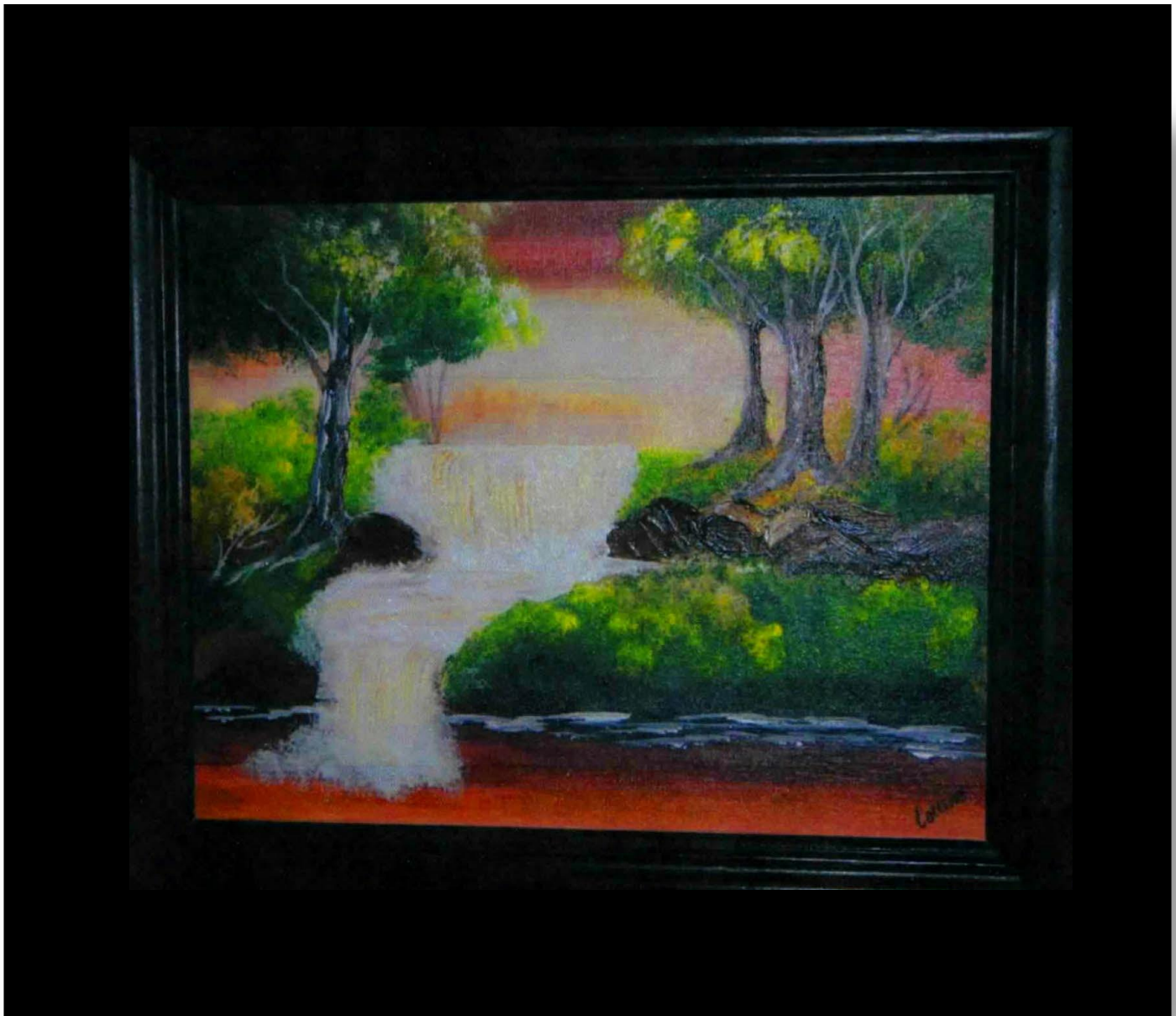


*Artistic Expressions by Colleen Ellis*  
*Twilight at the falls in High Definition*

Colleen Ellis

Email: [ibicraftylady@yahoo.com](mailto:ibicraftylady@yahoo.com)

Tele: (623)388-0717



## Supply List

11x14 Canvas Board

Transfer Paper

## High Definition Brushes

# 2 Script Liner

¾"Scruffy

Fan Brush

#8, ¾ " Flats

HD Palette knife

HD Texture Tools

## Folk Art High Definition Paints

4500 Wicker White

4514 Sunflower

4515 Yellow Light

4513 Yellow Ochre

4517 Yellow Citron

4519 Kelly Green

4522 Green Forrest

4520 Thicket

4507 Autumn Leaves

4543 Burnt Sienna

4512 Raw Sienna

4511 Burnt Umber

4532 Payne's Gray

4536 Flow Medium

4537 Clear Medium

## Trees:

Load #8 Flat brush with Burnt Umber, Wicker White and a touch of Payne's Gray on Burnt Umber side of brush. Use flat edge of brush for tree trunks and chisel edge of brush for branches.

## Rocks:

Load palette knife with Burnt Umber, Raw Sienna and a touch of Wicker White. Lay paint on like "frosting a cake". Touch flat side of knife to canvas and slide down diagonally to form rocks.

## Waterline:

Load  $\frac{3}{4}$ " flat brush with Flow Medium and Burnt Umber, darken waters' edge at shoreline.

Add moving water at the waters' edge with #8 Flat brush loaded with Wicker White. Pull on chisel edge of brush.

## Waterfall details:

Load Fan Brush with Wicker white and pull downward to make water "fall". Add Flow Medium to Fan brush and dip into Raw Sienna, blend, pull light lines vertically down waterfalls. Load palette knife with Wicker White and add texture by "frosting" the pool of water. Finish by loading  $\frac{3}{4}$ " Scruffy with Wicker White and pounce edges and splashes of waterfalls.

ENJOY!

*Artistic Expressions by Colleen Ellis*  
*Twilight at the falls*  
*in High Definition*



**Background:**

Load smooth HD texture tool with Wicker White and paint horizontal strokes through the center area of canvas, leaving about 2 inches at the top and bottom. Reload with Burnt Sienna and Autumn Leaves and paint top and bottom 2 inches of canvas. Darken slightly at the water line. Bring in some Autumn Leaves from the sides, leaving center area of canvas light. Next, add some Raw Sienna below the top edge,

blending into Autumn Leaves/Burnt Sienna and repeat at bottom edge of canvas, below the water line.

Transfer pattern if needed.



Load  $\frac{3}{4}$ " Flat brush with Raw Sienna and Burnt Umber, blend in some Clear medium for a more transparent look and darken the area at the  $\frac{1}{2}$  way point on the canvas, just below the upper waterfall. Load #8 Flat brush with Wicker White and pull downward strokes on flat edge of brush to form waterfall. Paint in pooling area of water and pull downward strokes on flat edge of brush again for lower waterfall.

Just above the upper waterfall, load #8 Flat with Raw Sienna and pull upward, some chisel strokes above the upper waterfall, add some clear medium to brush and brush horizontally to soften strokes.

Load #8 Flat brush with Burnt Umber and paint distant tree with the chisel edge of brush at the top left of waterfall. Load #3/4 flat brush with Wicker White and Clear Medium, brush over area to make it look misty.



Tree and shrub foliage:

Load  $\frac{3}{4}$ " Scruffy brush with Payne's Gray and pounce in 1<sup>st</sup> layer of tree and shrub foliage, You are building the layers from back to front (dark to light), leaving some of each color showing. Next, pounce in Burnt Umber at the waters' edge.



Reload with Kelly Green and Green Forest, pounce again for tree and shrub foliage, repeat with Yellow Citron and Yellow Light and finish with light pounces of Wicker White.

Load  $\frac{3}{4}$ " Scruffy with Burnt Sienna and Raw Sienna, pounce areas at the tree bottoms for the 3 trees on the right and left side of the left tree. Repeat again with Yellow Ochre and Sunflower Yellow.



---

*Pattern*

*Artistic Expressions by Colleen Ellis  
Twilight at the falls in High Definition*